

# \$3,500,000 - 17303 23 Avenue Nw, Edmonton

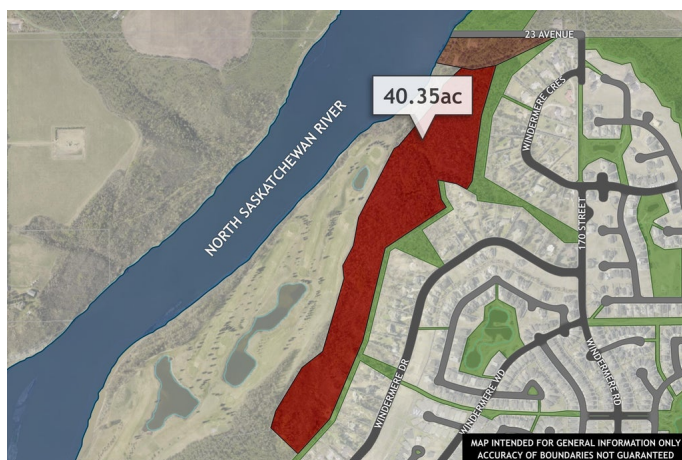
MLS® #E4265905

**\$3,500,000**

0 Bedroom, 0.00 Bathroom,  
Single Family on 40.33 Acres

Windermere, Edmonton, AB

Once-in-a-lifetime opportunity to own land in the river valley! 40.35 acres of privately-owned land with stunning views of the North Saskatchewan, River Ridge golf course and the natural beauty of Edmonton's river valley. Located in beautiful Windermere, this is a truly unique building opportunity on a private, gently-sloping parcel, down within the valley itself. Visit REALTOR® website for additional information.

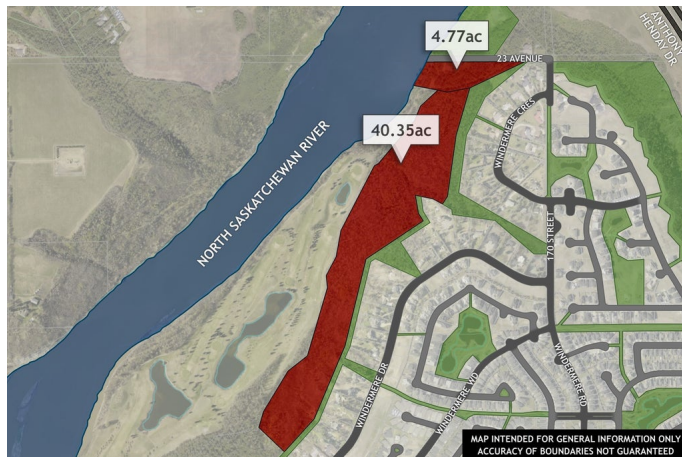


## Essential Information

MLS® #	E4265905
Price	\$3,500,000
Bathrooms	0.00
Acres	40.33
Type	Single Family
Sub-Type	Vacant Lot

## Community Information

Address	17303 23 Avenue Nw
Area	Edmonton
Subdivision	Windermere
City	Edmonton
County	ALBERTA
Province	AB
Postal Code	T6R 0T0



## Exterior

Exterior Features Backs Onto Park/Trees, No Through Road, Private Setting, River Valley View, River View, See Remarks

## Additional Information

Date Listed October 8th, 2021

Zoning AG

Data is deemed reliable but is not guaranteed accurate by the REALTORS® Association of Edmonton. Copyright 2022 by the REALTORS® Association of Edmonton. All rights reserved.

Listing information last updated on June 26th, 2022 at 2:32pm CDT